

The logo for ETIX, featuring the word "ETIX" in a bold, white, sans-serif font. A blue diagonal line crosses through the letter "X" from the bottom-left to the top-right. The logo is set against a dark blue rectangular background that is part of a larger graphic element resembling a folded document corner.

ETIX

2026

TOULOUSE  
MONTPELLIER  
LYON

**TECHNICAL  
SPECIFICATIONS**

**ETIX**

ETHICAL INTERNET EXCHANGE



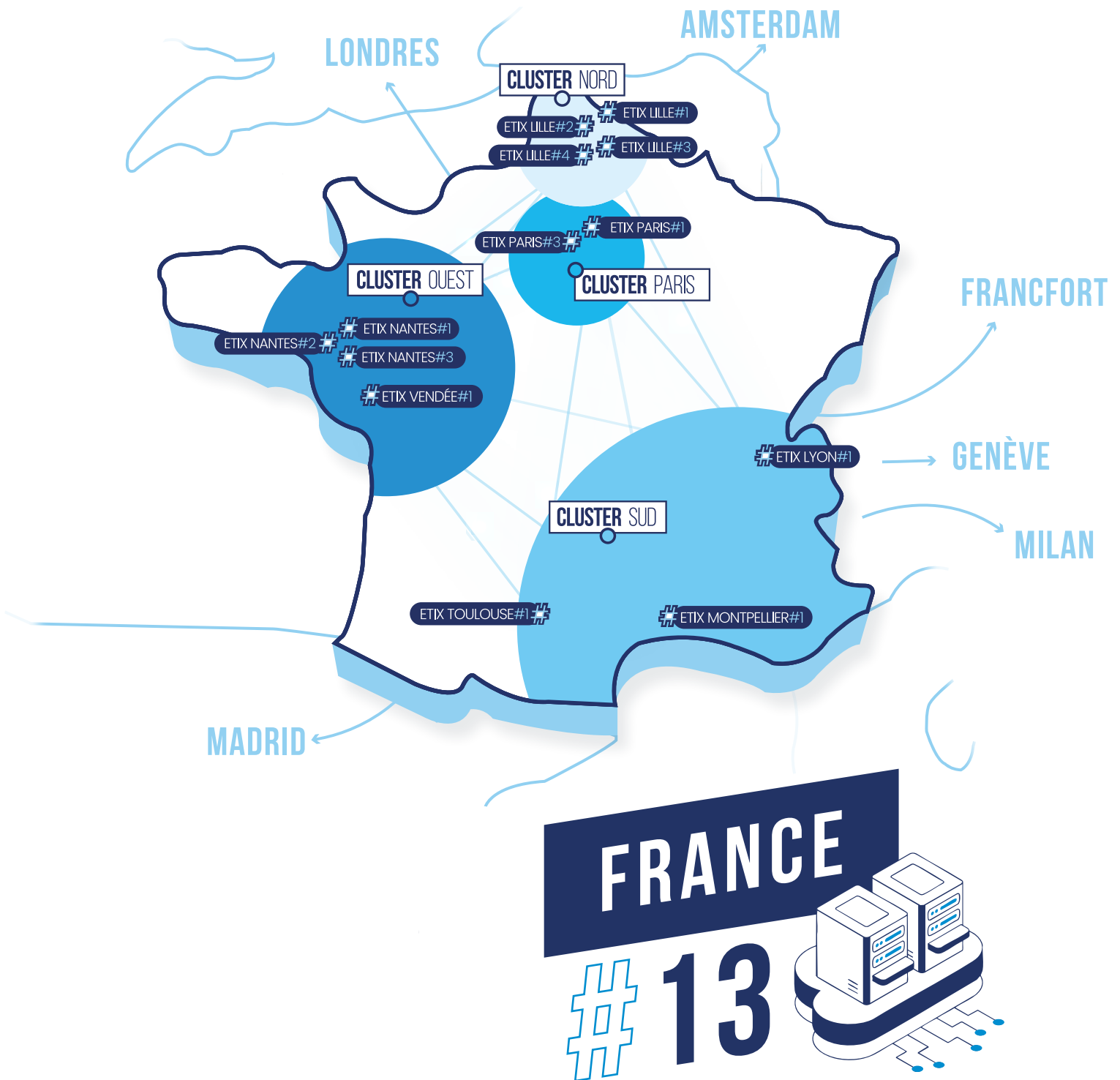
SOMMAIRE  
Contents

Technical Specifications	04-05
Connected Campus	06
ETIX TOULOUSE #1	07
ETIX MONTPELLIER #1	08
ETIX LYON #1	09
Network & Connectivity matrix	10

ETHICAL INTERNET EXCHANGE

# TECHNICAL SPECIFICATIONS

Four Interconnected Sites Designed for Performance, Compliance, and European Reach



# ETIX TOULOUSE

## A Strategic Regional Digital Hub for Southwestern France

Toulouse is more than just a tech-forward city, it's the beating heart of innovation in the Occitanie region. Known for its strong aerospace, research, and industrial sectors, Toulouse is now emerging as a key player in France's digital infrastructure landscape.

ETIX Toulouse is your gateway to a high-performance, highly connected digital ecosystem right in the heart of the region.

# ETIX MONTPELLIER

## A Regional Hub with Big Ambitions

Montpellier is a rising star in the South of France, a vibrant regional capital with a booming tech scene, strong research institutions, and a dynamic business ecosystem. Whether you're a growing digital business, a regional enterprise, or a public institution, ETIX Montpellier offers a powerful, local alternative to Marseille.

# ETIX LYON

## A Strategic Digital Hub in the Heart of France

Lyon is emerging as one of the most attractive locations for digital infrastructure in France. As the country's second-largest city, it offers a powerful combination of strong regional demand, strategic positioning between Paris and Marseille, and direct connectivity to major European markets including Geneva, Milan, and Frankfurt. In 2024, ETIX expanded its national footprint with the acquisition of Hostelyon, establishing a key presence in the Lyon metro area. This site acts as a regional connectivity hub, perfectly placed to support hybrid and multi-site architectures across France and beyond.

**940 KW**

On the data centers

**3**

Number of data centers

**PUE 1.3**

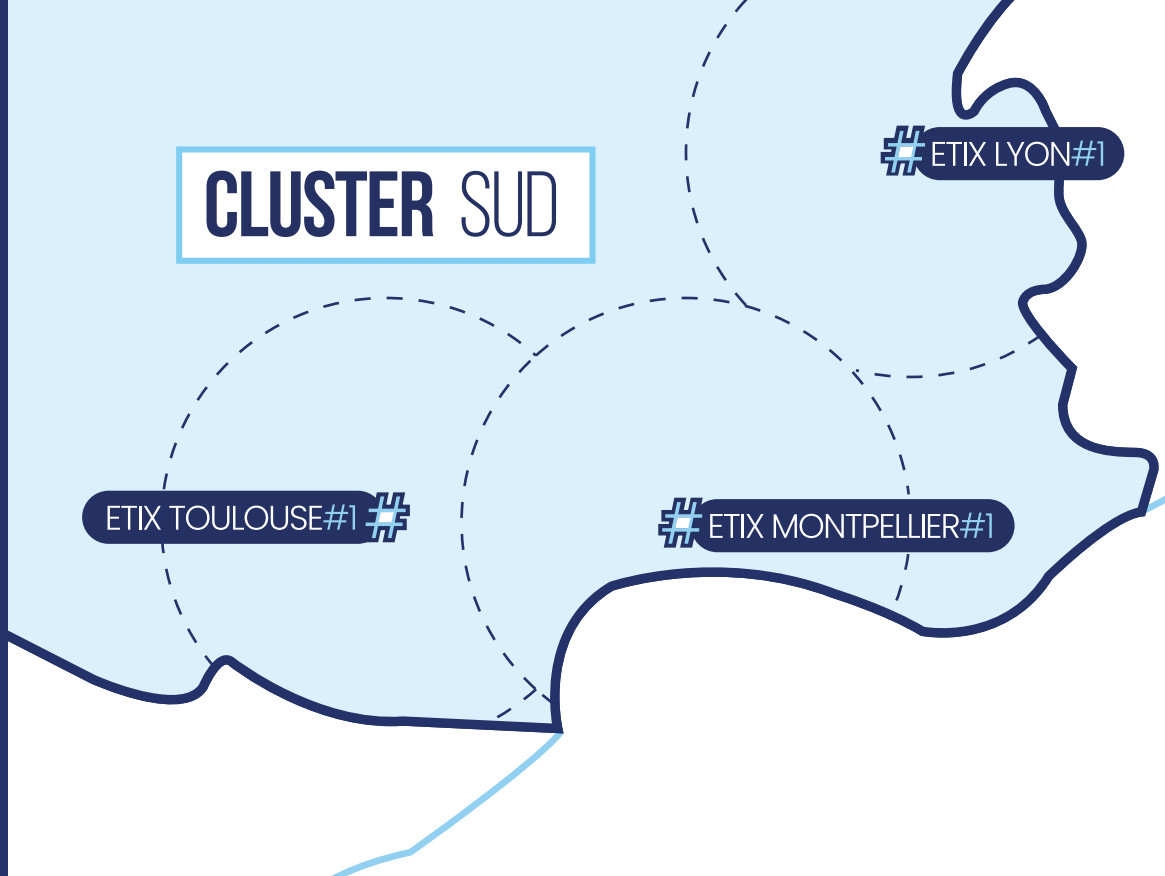
Target on all our data centers

**+20**

Telecoms operators available

**Campus**  
global customers

**Connected**  
Connectivity gateway for



## CLUSTER SUD ETIX CAMPUS

### ETIX TOULOUSE #1

10 rue des Freres Peugeot,  
31130 Balma, France

400 kw

150 rack

### ETIX LYON #1

81 Boulevard  
du parc d'Artillerie,  
69007 Lyon, France

240 kw

150 rack

### ETIX MONTPELLIER #1

1 Rue des Forgerons,  
44220 Couëron,  
France

300 kw

92 rack

# ETIX Toulouse #1 : Technical specifications



## Features

Network	15 carriers+
Capacity	400 kw of IT Loads
Density	1to 20kVA
PUE	1.3
Racks	150
Surface	485 sqm IT space

## Building & Connectivity

Features	Location / Transport	Floor Loading Capacity	Data centers space	Parking	Meeting room	Fiber Entry points	Meet me Room area
Specification	20 min from main train station by bus	1 500 kg/m2	485 sqm	Secured on-site car park	Available free of charge upon booking	2	2

## Power and Cooling

Features	Total IT Power Capacity	Power Configuration	Cooling Configuration	Average PUE	Rack Power Density	Water Usage Efficiency (WUE)	SLA
Specification	400 kVA	2N (Diesel generators, UPS, switchboards)	2N, Free-cooling	1.3 PUE	Up to 20 kW per cabinet (and more with specific cooling solutions)	<0.01l/kWh	SLA TIER IV equivalent 99.995% availability

## Security and Operations

Features	Physical security	Fire detection	Fire suppression	Remote Hands	Network Operations Center (NOC)	Service Desk	On site Operations
Specification	Mantrap entry (2026), Access card control, MFA with Biometry, CCTV surveillance	VESDA (very early smoke detection system) loop and optical detectors	Iner gas system (Nitrogen based)	24/7/365 support	24/7/365 monitoring	Online 24/7 /365 support	Staffed during business hours, On call 24/7 for interventions

## Certification & Sustainability



# ETIX Montpellier #1 : Technical specifications



## Features

Network	10 carriers+
Capacity	300 kw of IT Loads
Density	1to 20kVA
PUE	1.3
Racks	92
Surface	250 sqm IT space

## Building & Connectivity

Features	Location / Transport	Floor Loading Capacity	Data centers space	Parking	Meeting room	Fiber Entry points	Meet me Room area
Specification	22 min from main train station by bus	1 500 kg/m2	250 sqm	Secured on-site car park	Available free of charge upon booking	2	2

## Power and Cooling

Features	Total IT Power Capacity	Power Configuration	Cooling Configuration	Average PUE	Rack Power Density	Water Usage Efficiency (WUE)	SLA
Specification	300 kVA	2N (Diesel generators, UPS, switchboards)	2N, Free-cooling	1.3 PUE	Up to 20 kW per cabinet (and more with specific cooling solutions)	<0.01l/kWh	SLA TIER IV equivalent 99,995% availability

## Security and Operations

Features	Physical security	Fire detection	Fire suppression	Remote Hands	Network Operations Center (NOC)	Service Desk	On site Operations
Specification	Mantrap entry (2026), Access card control, MFA with Biometry, CCTV surveillance	VESDA (very early smoke detection system) loop and optical detectors	Iner gas system (Nitrogen based)	24/7/365 support	24/7/365 monitoring	Online 24/7/365 support	Staffed during business hours, On call 24/7 for interventions

## Certification & Sustainability



# ETIX Lyon #1 : Technical specifications



## Features

Network	20 carriers+
Capacity	240 kw of IT Loads
Density	1to 20kVA
PUE	1.3
Racks	150
Surface	280 sqm IT space

## Building & Connectivity

Features	Location / Transport	Floor Loading Capacity	Data centers space	Parking	Meeting room	Fiber Entry points	Meet me Room area
Specification	29 min from main train station by subway	1 500 kg/m2	280 sqm	Secured on-site car park	Available free of charge upon booking	3	2

## Power and Cooling

Features	Total IT Power Capacity	Power Configuration	Cooling Configuration	Average PUE	Rack Power Density	Water Usage Efficiency (WUE)	SLA
Specification	240 kVA	2N (Diesel generators, UPS, switchboards)	2N, Free-cooling	1.3 PUE	Up to 20 kW per cabinet (and more with specific cooling solutions)	<0.01l/kWh	SLA TIER IV equivalent 99,995% availability

## Security and Operations

Features	Physical security	Fire detection	Fire suppression	Remote Hands	Network Operations Center (NOC)	Service Desk	On site Operations
Specification	Mantrap entry (2026), Access card control, MFA with Biometry, CCTV surveillance	2 VESDA (very early smoke detection system) loops	Iner gas system (Nitrogen based)	24/7/365 support	24/7/365 monitoring	Online 24/7/365 support	Staffed during business hours, On call 24/7 for interventions

## Certification & Sustainability



# NETWORK & CONNECTIVITY MATRIX

Operator	ETIX		
	Toulouse #1	Montpellier #1	Lyon #1
Abaclouda			●
Alpes Networks			●
Alphalink	●		
Alsatis	●		
Ariane Network	●		
Axione	●		
Aza Telecom	●		
Celeste	●		●
Completel	●	●	
Covage		●	●
Cogent			●
Colt		●	●
Euroreseau		●	
Dynamic Cloud	●	●	●
France IX		●	●
Fullsave - Eurofiber	●	●	●
Herauld Telecom		●	
Hivane			●
Ielo		●	●
Initsys	●	●	

Operator	ETIX		
	Toulouse #1	Montpellier #1	Lyon #1
Intermediasud (IMS)	●		
Inherent (Unyx/Adista)	●	●	●
IP-Max			●
Lasotel	●		●
Mediactive	●		
Montpellier Med Metropole		●	
Muona			●
Netiwan	●		
Orange	●	●	●
Ovea		●	
Phibee			●
Prizz Infrastructure			●
SFR	●	●	●
Soliano THD			●
Sipartech			●
Terralpha		●	●
Telandgo			●
Viatel	●		
Zayo	●	●	●
Zefil	●		

## Neutral and Interconnected data centers :

### ETIX: A Data Center Platform Built for Regional and National Growth

ETIX operates a network of carrier-neutral data centers across France, designed to support regional enterprises, national service providers, and cloud-native and AI-driven workloads.

- **ETIX Lyon** is a strategic connectivity hub at the heart of France’s digital ecosystem, with over 25 telecom operators on site. It offers flexible, low-latency and redundant connectivity, ideal for national multi-site strategies and direct access to key European markets such as Geneva, Milan, and Frankfurt
- **ETIX Toulouse** serves as a purpose-built regional hub for Southwestern France.

With more than 20 network carriers, it provides optimized interconnection, low-latency access to national backbones, and strong support for hybrid cloud and regional digital ecosystems.

- **ETIX Montpellier** strengthens regional resilience as a smart alternative to Marseille. Featuring over 15 carriers, it is well suited for multi-site deployments, disaster recovery, and secure operations across the Occitanie and PACA regions.

Together, ETIX Lyon, Toulouse, and Montpellier form a scalable, resilient, and interconnected platform, delivering the performance, flexibility, and proximity required to support digital growth across Southern France and Europe.

**ETIX**

ETHICAL INTERNET EXCHANGE