

The logo for ETIX, featuring the word "ETIX" in a bold, white, sans-serif font. A blue diagonal line crosses through the letter "X" from the bottom-left to the top-right. The logo is set against a dark blue rectangular background.

ETIX

2026

NANTES / VENDÉE
**TECHNICAL
SPECIFICATIONS**

ETIX

ETHICAL INTERNET EXCHANGE



SOMMAIRE

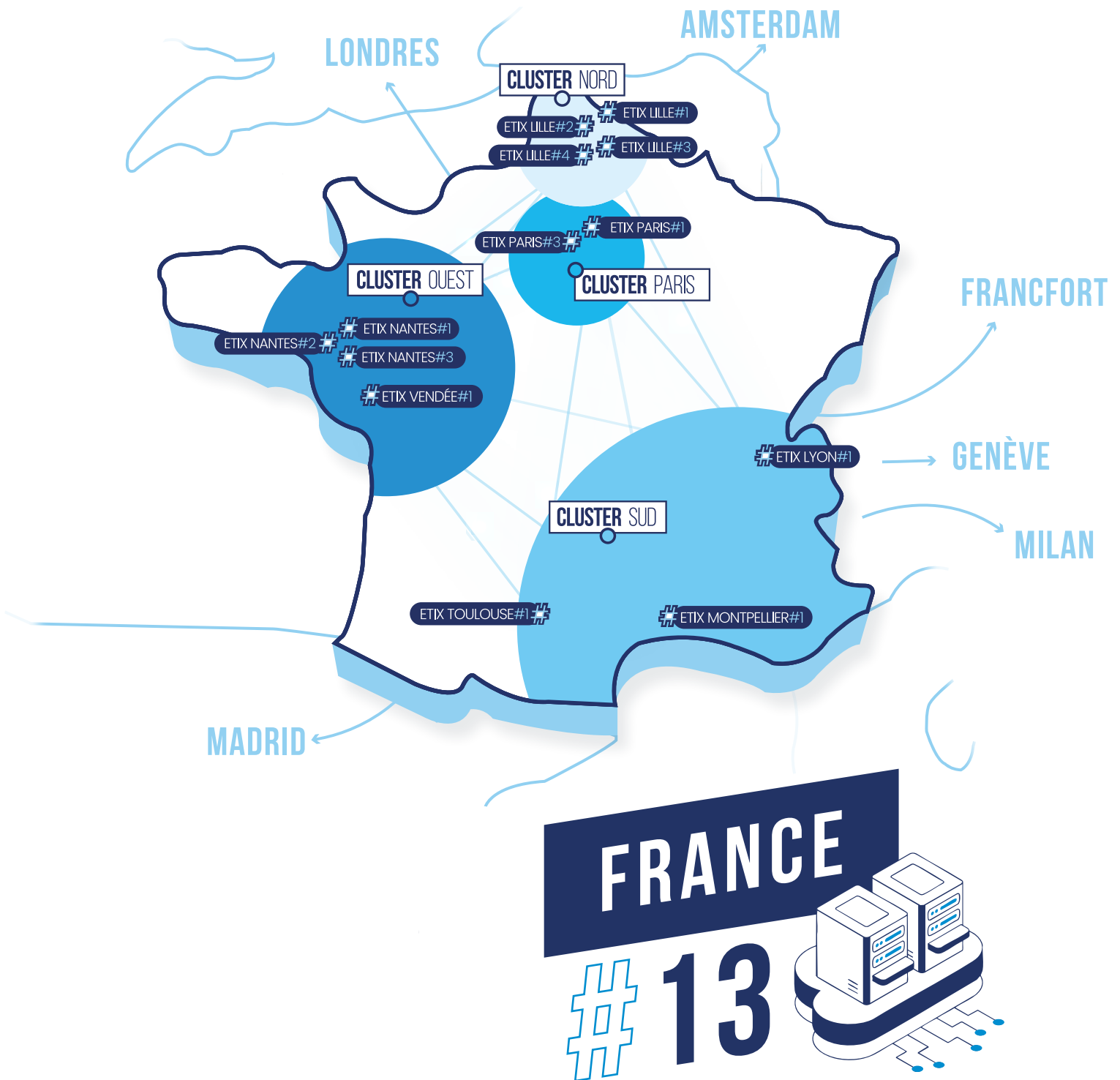
Contents

Technical Specifications	04-05
Connected Campus	06
ETIX NANTES #1	07
ETIX NANTES #2	08
ETIX NANTES #3	09
ETIX VENDÉE #1	10
Network & Connectivity matrix	11

ETHICAL INTERNET EXCHANGE

TECHNICAL SPECIFICATIONS

Four Interconnected Sites Designed for Performance, Compliance, and European Reach



Nantes brings together four interconnected sites that power regional growth and resilience.

Nantes is a major economic and digital hub in Western France. The region's dynamic business ecosystem, strong local talent pool, and access to competitive, renewable energy make it an ideal location for digital infrastructure. Whether serving local enterprises, public services, or national platforms, ETIX delivers the performance and reliability needed to scale securely.

ETIX is the regional data center leader in Western France, with four interconnected sites: three in the greater Nantes area and one in Vendée. ETIX Nantes #1 is recognized as the regional connectivity hub, hosting over 30 operators and offering high availability, low-latency regional transit, and direct access to national networks.

2.7MW

On west cluster

4

Number of data centers

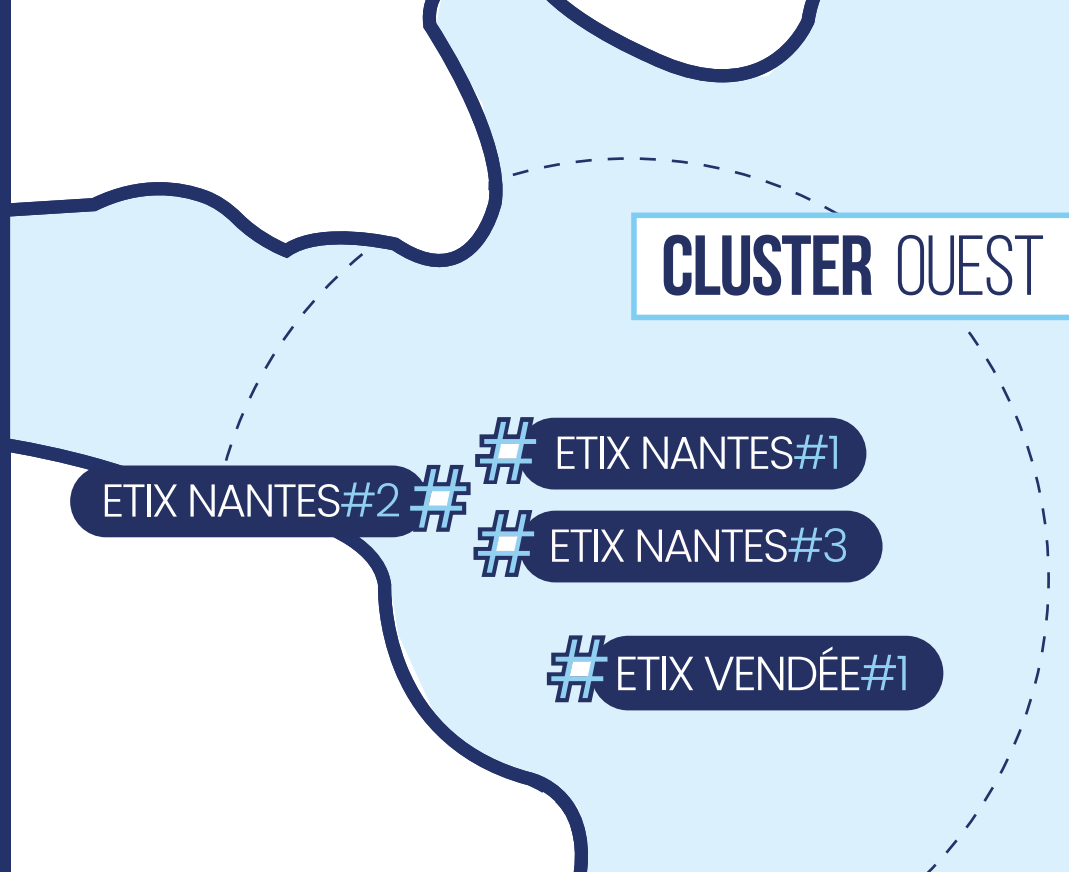
PUE 1.3

Target on all our data centers

+30

Telecoms operators available

Campus
global customers



Connected
Connectivity gateway for

CLUSTER OUEST ETIX CAMPUS

ETIX NANTES #1

2 Imp. Joséphine Baker,
44800 Saint-Herblain,
France

350 kw

140 rack

ETIX NANTES #2

14 Rue Véga,
44470 Carquefou,
France

900 kw

300 rack

ETIX NANTES #3

1 Rue des Forgerons,
44220 Couëron,
France

1200 kw

400 rack

ETIX VENDÉE #1

4 Imp. Philippe Gozola,
85000 La Roche-sur-Yon,
France

240 kw

120 rack

ETIX Nantes #1 : Technical specifications



Features

Network	30 carriers+
Capacity	350 kw of IT Loads
Density	1 to 20kVA
PUE	1.4
Racks	140
Surface	330 sqm IT space

Building & Connectivity

Features	Location / Transport	Floor Loading Capacity	Data centers space	Parking	Meeting room	Fiber Entry points	Meet me Room area
Specification	35 min from main train station by bus	1 500 kg/m2	330 sqm	Secured on-site car park	Available free of charge upon booking	2	2

Power and Cooling

Features	Total IT Power Capacity	Power Configuration	Cooling Configuration	Average PUE	Rack Power Density	Water Usage Efficiency (WUE)	SLA
Specification	200 kVA	2N (UPS, switchboards), N Generator + mobile	N+1, Free-cooling	1.4 PUE	Up to 20 kW per cabinet (and more with specific cooling solutions)	<0.01/kWh	SLA TIER IV equivalent - 99,995% availability

Security and Operations

Features	Physical security	Fire detection	Fire suppression	Remote Hands	Network Operations Center (NOC)	Service Desk	On site Operations
Specification	Mantrap entry (2026), Access card control, MFA with Biometry (2026), CCTV surveillance	2 VESDA (very early smoke detection system) loops	Iner gas system (Nitrogen based)	24/7/365 support	24/7/365 monitoring	Online 24/7 /365 support	Staffed during business hours, On call 24/7 for interventions

Certification & Sustainability



ETIX Nantes #2 : Technical specifications



Features

Network	15 carriers+
Capacity	900 kw of IT Loads
Density	1 to 20kVA
PUE	1.3
Racks	300
Surface	750 sqm IT space

Building & Connectivity

Features	Location / Transport	Floor Loading Capacity	Data centers space	Parking	Meeting room	Fiber Entry points	Meet me Room area
Specification	45 min from main train station by bus	1 500 kg/m2	750 sqm	Secured on-site car park	Available free of charge upon booking	2	2

Power and Cooling

Features	Total IT Power Capacity	Power Configuration	Cooling Configuration	Average PUE	Rack Power Density	Water Usage Efficiency (WUE)	SLA
Specification	900 kVA	2N distributed (Diesel generators UPS, switchboards)	2N distributed, Free-cooling	1.3 PUE	Up to 20 kW per cabinet (and more with dedicated cooling equipment)	<0.01l/kWh	SLA TIER IV equivalent 99,995% availability

Security and Operations

Features	Physical security	Fire detection	Fire suppression	Remote Hands	Network Operations Center (NOC)	Service Desk	On site Operations
Specification	Mantrap entry (2026), Access card control, MFA with Biometry (2026), CCTV surveillance	2 VESDA (very early smoke detection system) loops	Iner gas system (Nitrogen based) or Water-mist	24/7/365 support	24/7/365 monitoring	Online 24/7/365 support	Staffed during business hours, On call 24/7 for interventions

Certification & Sustainability



ETIX Nantes #3: Technical specifications



Features

Network	30 carriers+
Capacity	1 200 kw of IT Loads
Density	1 to 20kVA
PUE	1.4
Racks	400
Surface	900 sqm IT space

Building & Connectivity

Features	Location / Transport	Floor Loading Capacity	Data centers space	Parking	Meeting room	Fiber Entry points	Meet me Room area
Specification	55 min from main train station by bus	1 500 kg/m2	900 sqm	Secured on-site car park	Available free of charge upon booking	2	2

Power and Cooling

Features	Total IT Power Capacity	Power Configuration	Cooling Configuration	Average PUE	Rack Power Density	Water Usage Efficiency (WUE)	SLA
Specification	1200 kVA	2N (Diesel generators, UPS, switchboards)	2N	1.4 PUE	Up to 20 kW per cabinet (and more with specific cooling solutions)	<0.01/kWh	SLA TIER IV equivalent 99,995% availability

Security and Operations

Features	Physical security	Fire detection	Fire suppression	Remote Hands	Network Operations Center (NOC)	Service Desk	On site Operations
Specification	Mantrap entry, Access card control, MFA with Biometry (2026), CCTV surveillance	2 VESDA (very early smoke detection system) loops	Iner gas system (Nitrogen based)	24/7/365 support	24/7/365 monitoring	Online 24/7/365 support	Staffed during business hours, On call 24/7 for interventions

Certification & Sustainability



ETIX Vendée #1 : Technical specifications



Features

Network	10 carriers+
Capacity	240 kw of IT Loads
Density	1 to 20kVA
PUE	1.4
Racks	120
Surface	300 sqm IT space

Building & Connectivity

Features	Location / Transport	Floor Loading Capacity	Data centers space	Parking	Meeting room	Fiber Entry points	Meet me Room area
Specification	40min away from Nantes airport, 15 min from La-Roches-sur-Yon train station	1 500 kg/m2	300 sqm	Secured on-site car park	Available free of charge upon booking	2	1

Power and Cooling

Features	Total IT Power Capacity	Power Configuration	Cooling Configuration	Average PUE	Rack Power Density	Water Usage Efficiency (WUE)	SLA
Specification	200 kVA	2N (UPS, switchboards) 2N Generator (2026)	2N distributed, Free-cooling	1.4 PUE	Up to 20 kW per cabinet (and more with specific cooling solutions)	<0.01l/kWh	SLA TIER IV equivalent 99.995% availability

Security and Operations

Features	Physical security	Fire detection	Fire suppression	Remote Hands	Network Operations Center (NOC)	Service Desk	On site Operations
Specification	Mantrap entry (2026), Access card control, MFA with Biometry (2026), CCTV surveillance	2 VESDA (very early smoke detection system) loops	Iner gas system (Nitrogen based)	24/7/365 support	24/7/365 monitoring	Online 24/7/365 support	Staffed during business hours, On call 24/7 for interventions

Certification & Sustainability



NETWORK & CONNECTIVITY MATRIX

Operator	ETIX Nantes #1	ETIX Nantes #2	ETIX Nantes #3	ETIX Vendée #1	Operator	ETIX Nantes #1	ETIX Nantes #2	ETIX Nantes #3	ETIX Vendée #1
Alsatis	●	★	★		Heliaq	●	★	★	●
Apinet	●	★	★		Ielo	●	●	●	
Arteria	★	★	●		Inherent (Adista/Unyc)	●	★	★	
Axione	●	★	★		Linkt	●	★	★	
Bouygues Telecom	●	●	★	●	Megalis Bretagne	●	★	★	
BT Blue	●	★	●	●	Nantes Networks	●	★	★	
Celeste	●	●	●		Networkh	●	★	★	
Celya	●	★	★		NXO	●	★	★	
Cogent	●	★	●		Orange	●	●	●	●
Completel	●	★	★		Ouest Network	●	★	★	
Covage	●	●	●	●	SFR	●	●	●	●
Kosc	●	★	★		Sipartech	●	●		
Eurofiber / Eurafibre	●	●	●		Terralpha	●	●	★	
Free Pro	●	●	●		Va Télécom	●	●	●	
Gigalis	●	●	★	●	Zayo	●	★	★	

* Opérateurs accessibles via des rocadez intersites depuis ETIX NANTES #1.

Neutral and Interconnected data centers :

One Regional Platform. Built for Scalability, Interconnection, and Resilience.

ETIX Nantes is designed to meet the needs of local and national players seeking reliable, sovereign infrastructure. Our ecosystem of four data centers offers regional redundancy, seamless interconnection, and scalable power and cooling capacity.

BUILT TO SUPPORT DIGITAL TRANSFORMATION ACROSS WESTERN FRANCE

Strategic Connectivity, from edge deployments to regional hybrid IT, ETIX empowers your infrastructure with:

- Native interconnection between four active sites across Nantes and Vendée
- Over 30 telecom operators and ISPs available at ETIX Nantes #1
- Carrier-neutral architecture : connect to the providers you choose
- Partner Enabled Fiber Backbone Connecting all ETIX Sites

Whether supporting public services, digital startups, or national enterprises, ETIX provides the secure, connected, and scalable infrastructure Western France depends on..

ETIX

ETHICAL INTERNET EXCHANGE